



Quality Since 1988
S-KUMAR
M E D I C A L

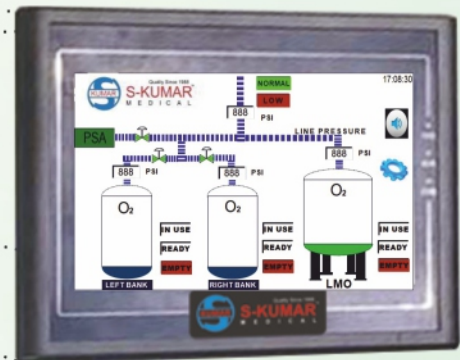
Automatic Changeover Units

for Medical Gas Pipeline System

Changeover to
OXY | **GEN 24 x 7**



4- Source Automatic Changover Unit



7 Inch Touch Screen Display

Features

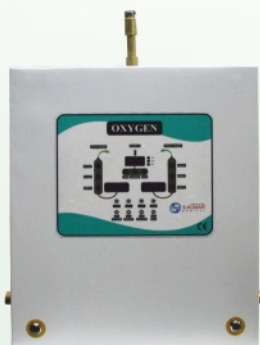
- ◆ 7inch Touch Screen HMI display for Visual signal.
- ◆ PLC based control for Reliable operation.
- ◆ Stable & Uninterrupted supply of gas pressure at 4.2bar. (2100 lpm)
- ◆ Parameter setting ,Pressure unit display & audio mute option available.
- ◆ Optimization of residual gases in cylinder.
- ◆ Supports communication protocol such as RS485, RS232 & Modbus for BMS interface.
- ◆ Customization of Two & Three source display available on request.
- ◆ SMS & E-Mail alert facility available.

Conforms to: IS / ISO 7396 - 1 : 2016 + A1 : 2017
IS / ISO 10524 - 2 : 2018, IS / ISO 10524 - 4 : 2008
HTM 02-01 Part A : 2006

Certifications: ISO 13485:2016 – Medical devices – Quality Management Systems
ISO 9001:2015 - Quality Management Systems



S-Kumar 24x7E (2 & 3 source system)



Gas Services	Oxygen	N ₂ O	AIR	4	AIR	7	N ₂	CO ₂	Mixed Gas
Flow LPM@4.2 bar	1350	1350	1350	1350	1350	1350	1350	1350	

- Pressure Stabilizer for stable discharge pressure & flow.
- Relay Logic controlled change-over is accomplished automatically.
- Digital pressure indication for accurate reading.
- Embedded Visual & Audible signal.
- Automatically resets itself for next cycle when depleted bank is replenished.
- Designed to suit all medical gases for gas specific usage and optimized residual gas
- Status indicators and Pressure unit options for psi, bar & kg/cm².
- Manual changeover buttons for servicing either side of the system.

S-Kumar 24x7A (2 & 3 source system)



Gas Services	Oxygen	N ₂ O	AIR	4	AIR	7	N ₂	CO ₂	Mixed Gas
Flow LPM@4.2 bar	2100	2100	2100	2100	2100	2100	2100	2100	

- Pressure Stabilizer for stable discharge pressure & flow.
- Relay Logic controlled change-over is accomplished automatically.
- Analog pressure guage for accurate reading.
- Embedded Visual & Audible signal.
- Automatically resets itself for next cycle when depleted bank is replenished.
- Designed to suit all medical gases for gas specific usage and optimized residual gas.
- Status indicators with alarm for each source.

S-Kumar SA (2 source system)



Gas Services	Oxygen	N ₂ O	AIR	4	AIR	7	N ₂	CO ₂	Mixed Gas
Flow LPM@4.2 bar	450	450	450	450	450	450	450	450	

- Pneumatic change-over is accomplished automatically.
- Analogue pressure gauge for accurate reading.
- Designed to suit all medical gases for gas specific usage.
- Remote Status indicators with Alarm (Optional)
- Stable discharge pressure.

Technical Data:

Conforms to	IS / ISO 7396 - 1 : 2016 + A1 : 2017 IS / ISO 10524 - 2 : 2018 IS / ISO 10524 - 4 : 2008 HTM 02-01 Part A : 2006
Inlet Connection	1" BSP, 3/4" BSP*
Outlet Connection	1/2" BSP, 3/4" BSP**

Manifold Header Connection	1/2" BSP
Modular Manifold Connection	5/8" BSP
Relief Valve Setting (Line Safety)	5.17 bar (75 psi)
Relief Valve Setting (High Pressure Regulator)	15.5 bar (225 psi)

S-Kumar Engineering Works

Register office:

14, Raju naidu 2nd street
Behind Lotus Hyundai Showroom
Ganapathy, Coimbatore - 641006

Machinery unit:

7/50-3, Keeranathan Road
Opposite to CRI RANSAR Ltd
Keeranatham, Coimbatore - 641035

Fabrication Unit:

7/18-G, Industrial Estate
Keeranatham Road
Coimbatore -641035

+91 9894430303, +91 422 2330358 | skumarengg@yahoo.com, skumarengineeringworks@gmail.com

www.skumarmedical.com