

LASER DIAMETER GAUGE

Puretronics Introduces non-contact Laser Diameter Gauge and Online controller in Collaboration with European Company. Non-contact measurement technique enable you to stabilize your extrusion coating, shaping process, especially for wire & cable production lines. It reduces waste, reduces manpower, saves raw material and ensures product quality. It is easy to setup and use. It is made of aluminium housing for durability even in rugged production environments. It is less sensitive to product vibration and movement.

FEATURES:

- High & Low Value Alarm, Out of range Alarm, Alarm On - Off Selection.
- Automatic Correction of Line Speed to match the set value, Auto / Manual Selection.
- Analog Output: 0 to 10 VDC
- Communication Port Rs 232 / 485.
- Data Logger (Optional)
- PC based software (Optional)

APPLICATIONS:

- Wire Drawing , Fibre Optics, Telecom, Building Wire, Power Cable,
- Tube Extrusion , Glass Rods / Tubes, Flate / Different Profile Shape Materials.

ACCURACY IN ANY POSITION:

No matter where you position LAZER 2008 in your process line you get precise, consistent measurement data due to the simplified optical path, rotating mirror drum, solid state laser diode, built-in digital signal processing and specially crafted optical lenses.

A rugged , machine aluminium case sealed to keep out moisture and dirt-even in the harshest environments.

In fact, LAZER 2008 measurement is so stable that after a year of continuous operation most users will have no need to recalibrate the gauge. The result is a non-contact, in-process system that consistently corrects and supplies accurate measurement from the controller and keeps your line producing high-quality, cost-efficient product.

SENSOR HEAD:

Using an advanced digital signal processor, the **LAZER 2008** sensor head minimizes external interference to give you the most accurate and stable measurements.

- High accuracy, low drift measurements.
- Rugged case construction sealed for longer life.

DISPLAY :

The 5 digit display and simple operating key system. Extension flexibility of Control & Display.

LAZER 2008



LAZER 2008B



Extra Display



Stand



Digital Pot



Analog Pot

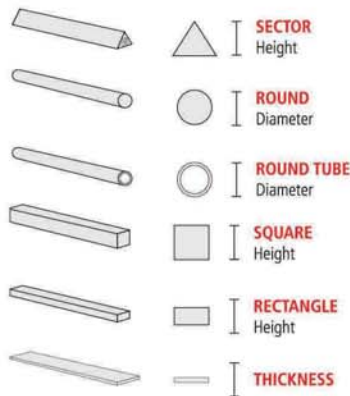


TECHNICAL SPECIFICATIONS:

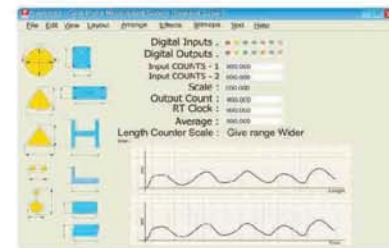
MODEL	LAZER 2008	LAZER 2008B	LAZER LM-10X
Measurement Range	0.8 - 35mm	1.0 - 150mm	0.2 to 10mm
Gate Size	50 mm	190 mm	15 mm
Scan Velocity	156 mts/sec	210 m/s	110 mts/sec
Resolution	1 micron	1 micron	1 micron
Repeatability*	± 2 micron	± 5 micron	± 1 micron
Accuracy*	± 2 micron or ± %0.1 of reading value	± 5 micron or ± %0.1 of reading value	± 1 micron or ± %0.1 of reading value
Scan Rate	416 Scan/sec	416 Scan/sec	400 Scan/sec
Operating Temperature	0 - 50° C	0 - 50° C	0 - 50° C
Relative Humidity	0 - 95% non Condensing	0 - 95% non Condensing	0 - 95% non Condensing
Power Supply	85Vac to 285Vac	85Vac to 285Vac	24V DC
Dimension (W x H x D)	385 W x 150 H x 82 D mm	820 x 365 x 82 mm	190 x 100 x 46 mm
Power Consumption	Less than 10 Watt	Less than 10 Watt	Less than 10 Watt
Weight	4.760 kg	13.240 kg	2.8 kg
Communication	Rs 232/ 485	Rs 232/485	Rs 232/485

* Influenced by correct position, repeat position of sample.

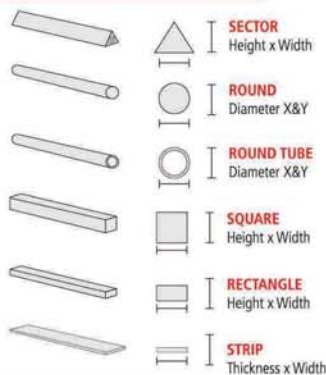
APPLICATION EXAMPLE 1



PC BASED SOFTWARE :



APPLICATION EXAMPLE 2



HMI DISPLAY :



APPLICATION EXAMPLE 3

