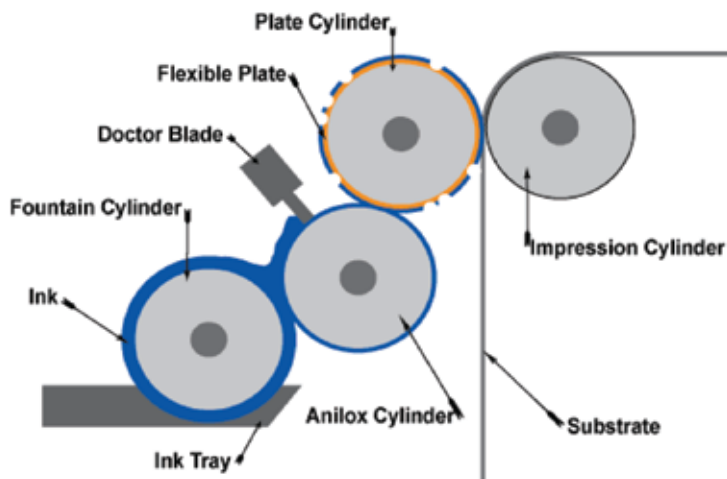


## CERAMIC ANILOX ROLL

It features an excellent performance such as abrasion and erosion resistance, stable print quality, long effective life time, low composite cost with the first-class quality in the world. The cells are characterized of chiseled shape, smooth cell wall, for flexible printing requirement, and is easy to clean.

### APPLICATION :

Wide Flexo Press  
Narrow and Label Flexo Press  
Corrugation Paper Printing Machine  
UV Coating  
CI Flexo Press

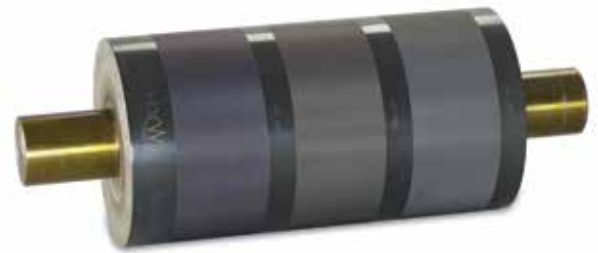


### PRODUCT PARAMETERS :

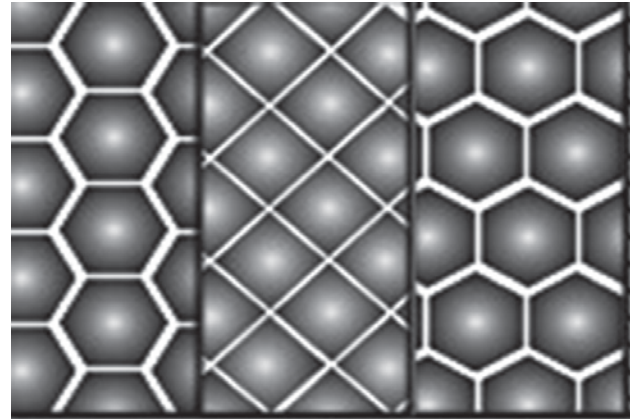
Screen Scope : 100-1200LPI  
Diameter Range : 40-600mm  
Maximum Width : 5000mm  
Cell Shape : 60° Hexagon  
: 30° Hexagon  
: 45° Diamond

## CERAMIC MIRROR FINISH ROLLER, SATIN FINISH ROLLER

- Mirror finish roller and satin finish roller are widely used in plastics, leather, paper, textile, packaging and printing, steel and other industries.
- Abrasion resistance : superhard ceramic roller can increase the hardness from hard chrome plating layer from HRV 800 to HRV 1200 above
- Erosion resistance : Thermal sprayed ceramic alloy material has a very erosion resistance ability, it has been widely used in harsh environments such as petrochemicals.
- Maximum processing capacity: 600mm x L4500mm



CELL SHAPE:



30° HEXAGON

45° DIAMOND

60° HEXAGON



CLEANING BRUSH  
CERAMIC ANILOX ROLL

