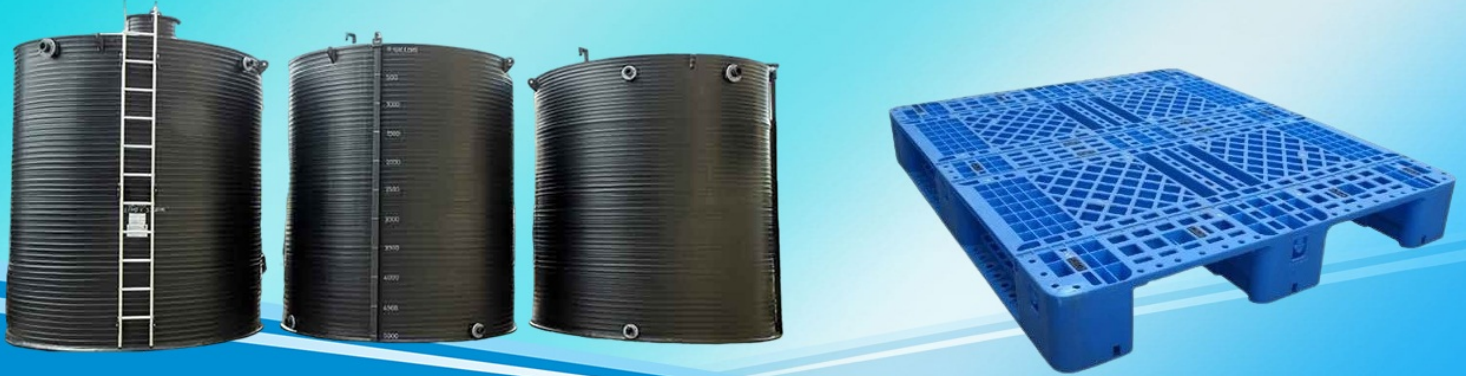




**We use Top-Quality Components, Materials,  
and Employ Modern Machines in their Manufacturing.**



100 LTR Plastic Insulated Box, 1000 LTR Plastic Insulated Ice Box, 120 LTR Wheel Waste Bin, 15000L Hdpe Chemical Tank, 15KG HDPE Crates, 240 LTR Wheeled Waste Bin, 25 LTR Plastic Ice Box, 35L Plastic Bin, 40KG HDPE Crates, 660 LTR Plastic Insulated Ice Box, Biomedical Waste Bin, Blue HDPE Crates, Chemical Storage Tanks, Dairy Milk Crates, Fabricated HDPE Crates, etc.



**15000L HDPE CHEMICAL TANK**



**CHEMICAL STORAGE TANKS**



**MIXING TANK**



## About Us

Since its inception in 2017, Sri Sai Plast has been steadily expanding its business and working as a dynamic company. As a leading manufacturer and supplier, we offer a diverse range of high-quality products including Chemical Storage Tanks, Mixing Tanks, Biomedical Waste Bins, Plastic Insulated Ice Boxes, HDPE Crates, Plastic Export Pallets, Plastic Bun Crates, and more. Our products are made from top-quality raw materials such as HDPE and plastics, and we constantly strive to improve as well as innovate items in our range to meet the diverse requirements of market.

Our primary objective is to develop quality products that are reliable. We are committed to ensuring customer satisfaction by delivering high-quality products and services. To achieve our goals, we have appointed a team of top professionals who are experts in their respective fields. Our experts provide personalized suggestions and such products that benefit our customers.



## Key Facts

<b>No of Staff</b>	10
<b>Year of Establishment</b>	2017
<b>OEM Service Provided</b>	No



**Our Products**



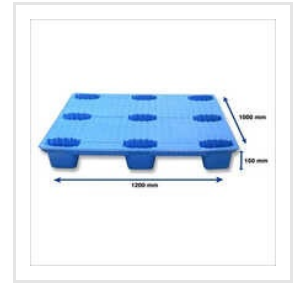
**Rectangular HDPE Crates**



**Industrial HDPE Crates**



**15KG HDPE Crates**



**Unbreakable Blow Molded Plastic Pallet**



**Spiral HDPE Tank**



**120 LTR Wheel Waste Bin**



**240 LTR Wheeled Waste Bin**



**Swing Lid Dustbin**



**Blue HDPE Crates**



**Fabricated HDPE Crates**



**Plain Top Roto Molded Polyethylene Pallet**



**Roto Molded 4 Way Pallets**



**Roto Molded Polyethylene Pallet**



**Plastic Export Pallet**



**Biomedical Waste Bin**



**40KG HDPE Crates**



**SRI SAI PLAST**

+919340519986



ADDRESS

**B-210, Green View Heights, Raj  
Nagar Extension, Ghaziabad,  
Uttar Pradesh, India (201017).**



EMAIL

**srisaiplast17@gmail.com**



MOBILE

**+919340519986**



WEBSITE

**www.srisaiplast**

KEY PERSONNEL

**Pradeep Singh Parihar**

(PROPRIETOR)

DESIGNED AND  
DEVELOPED BY

**trade  
india.**