



**PRIME**

*Think Beyond The Sky*

Cuplock System Fittings



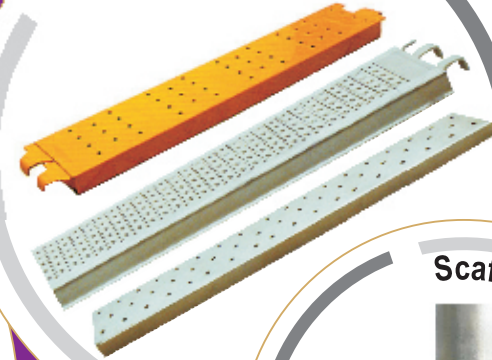
Cuplock Scaffolding



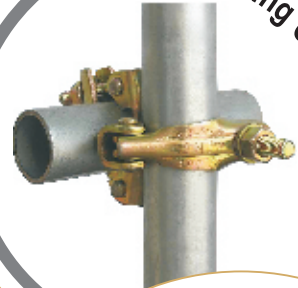
Steel Props



Walkway Boards



Scaffolding Couplers



Formwork Fittings



Universal Jack



Steel Prop Fittings



**MANUFACTURER & EXPORTER OF SCAFFOLDING SYSTEMS & ACCESSORIES**

## WATER DROP INTRODUCTION OF MOST TRUSTED SCAFFOLDING COMPANY OF INDIA

**Prime Steeltech (I) Pvt. Ltd.** is a professionally managed company based in Mumbai, India. This ISO 9001 certified company was founded by a team of well qualified technocrats, who are engaged in designing work and supplying of entire range of steel scaffolding systems, components & accessories, using indigenous technology and Niche expertise.

Offering total solutions like designing, supply, hire and erection. Apart from these services we also undertake 'Service Contract' for all types of scaffolding applications catering to various types of civil structures such as nuclear power projects, bridges, flyovers, industrial project, multi-storey commercial and residential buildings, refineries, cement & power plants, boilers etc.

Over the years of service provided, Prime Steel Tech (I) Pvt. Ltd. has become a leading supplier of scaffolding systems in India and spreading its wings globally. Under the strong leadership of our Founder Director **Mr. Dharmesh Bhatt** and Executive Director **Mr. Jayraj Bhatt** the company has been successful in making a mark among the renowned names in the domain of scaffolding supplier. With their sharp business acumen and ethical trade practices the company has achieved respectable position in the construction industry across PAN India region.

The company is now aggressively paving its way into the global arena with offices coming up shortly in Dubai and Saudi-Arabia. Our strategically well placed production unit and head office in Mumbai gives us a Cutting Edge Benefit from our competitors across the country to facilitate all kinds of domestic and foreign trades.

Thereby providing a seamless and timely supply to our esteemed clients in domestic as well as global markets. Our company is relentlessly in the process of updating the technology and finding newer and better ways of production which makes our pricing and quality unbeatable in the market.

### From the Founder's Desk

*We dream of making **Prime Steeltech (I) Pvt. Ltd.** One of the largest infra supply company with core competencies. The intent to create value for customers and value for shareholders. We aim to simplify the methods and seek low cost. We firmly believe in **Service First Oriented Business.***

*Our experience in providing best quality materials with cost efficiency, timely supply and our continuous updation of the technology used will enhance your confidence in us to make us your most preferred scaffolding supplier across globe.*

*Zero defect in product quality and logistics is our prime goal, hence*

*"Customer satisfaction is our core motto and the ultimate reason for our success"*

### Management Directory



**Dharmesh Bhatt**  
**Founder Director**  
M. +91 9322 321421  
dharmesh@primesteeltech.co.in



**Jayraj Bhatt**  
**Director (Biz. Devp)**  
M. +91 9393 161504  
jayraj@primesteeltech.co.in

## TELESCOPIC STEEL PROPS



Sizes	Closed (Metres)	Extended (Metres)	Self Weight (In Kg.)	
			Heavy Duty	Light Duty
EPSP-11	1.40	2.50	12.25	9.15
EPSP-13	1.90	3.10	14.40	10.60
EPSP-15	1.90	3.45	15.85	11.60
EPSP-16	2.20	3.90	17.50	12.75
EPSP-17	2.50	4.65	20.40	14.70
EPSP-19	3.00	5.40	23.75	16.75
+/- 3% of Weight tolerance will be applicable.				



• Permissible load 15 kN at any telescopic length for Heavy duty prop. • Permissible load 7.5k kN at any telescopic length for Light duty Prop.

**NOTE:** Any other 'SIZES' and 'THICKNESS' can be manufactured in accordance to the specifications mentioned in the inquiry.

### Specification:

- Outer member made of 60.30 mm OD round pipe for Heavy Duty Props 3.00mm thickness and for Light Duty 2.0mm.
- Inner member made of 48.3mm OD round pipe For
- H.D. 3.2/ 3.00mm and L.D. 1.80/2.00mm.
- Prop Nut: 62.3 mm ID, Made of Casting Steel Light Duty – 420 Gm
- Top and Bottom plates are made of 120 x 120 x 6mm M.S. Plate.
- Heavy duty Malleable Cast- Iron Nut gives the adjustment for levelling.
- G' Pin made of 'High- Tensile' steel provided for coarse adjustment made of 10/12 mm dia round bar.
- Coating: Spray Paint, Dip Paint using Synthetic Enamel paint, Hot Dip Galvanize Prop & Powder Coated Prop (Color as per client requirements Yellow, Blue, Orange )

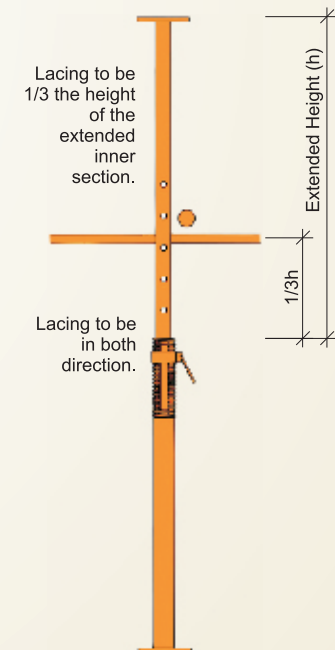






## Safety Instruction:

- Safe working Loads allow  $1.5^\circ$  out of plumb loaded concentrically.
- Props must be braced in both directions by tubes & Double coupler when extended beyond 3.75 Mtrs.
- Lacing to be done at  $1/3^{\text{rd}}$  the height of the extended inner section & to be in both direction.
- While double staging, lower prop shall be braced at two levels whereas upper Prop, at one level. All these three bracing have to be in both directions.





## CUPLOCK SCAFFOLDING SYSTEMS

### 1) Cup Lock Verticals/ Standard:

Cuplock Verticals are the principal load bearing members comprising of sets of Top and Bottom Cups. The Bottom Cups are welded in position at 500mm distance. The Verticals are made of 3mm thickness (48.3 mm OD) pipes and are drilled for the fixing of Spigot Joints at both the ends.

Sizes of Cuplock Verticals / Standards

Size (In mm)	Self – Weight (In Kg./ Nos.)	Cups (In no.)
3000	13.65	6
2500	11.40	5
2000	9.15	4
1500	6.85	3
1000	4.60	2
500	2.30	1

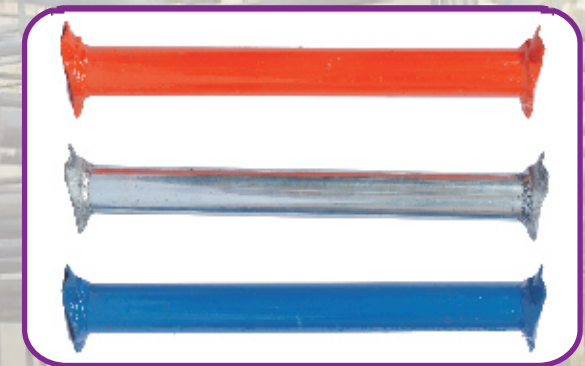


### 2) Cuplock Ledgers / Horizontals:

Cuplock Ledger / Horizontals are made of 3mm thickness (48.3mm OD) with forged ledger blades welded at bottom the ends. Length of ledgers / Horizontal is calculated between Centre to Centre of such two verticals.

Sizes of Cuplock Verticals/ Standards

Size (In mm)	Length (In mm)	Self – Weight (In Kg./ Nos.)
2400 C/c	2352	8.22
2000 C/c	1952	6.90
1800 C/c	1752	6.20
1500 C/c	1452	5.20
1200 C/c	1152	4.20
1000 C/c	952	3.55
500 C/c	452	1.85

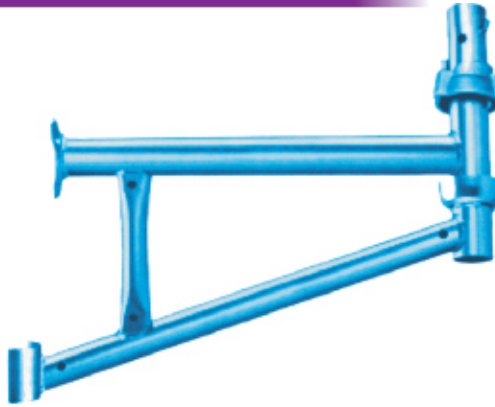


## CUPLOCK SCAFFOLDING SYSTEMS

Intermediate Transom



Hop-up Bracket (Board Bracket)



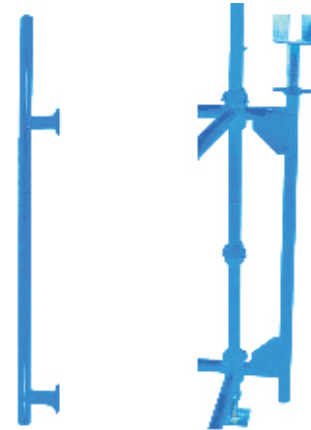
Cuplock Cantilever Frame



Drop Head

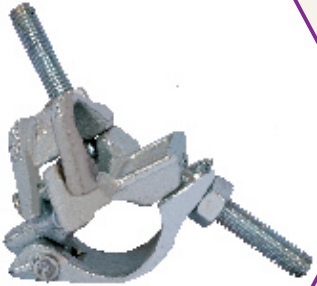


Cuplock Beam Bracket

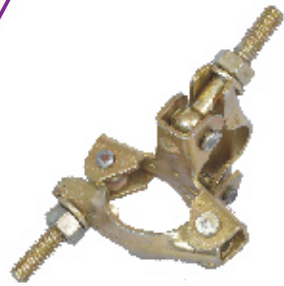




## SCAFFOLDING ACCESSORIES



Drop Forged Double / Fixed Coupler



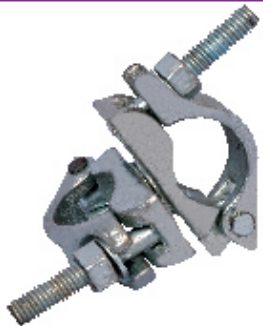
Pressed Double / Fixed Coupler



Sleeve Coupler



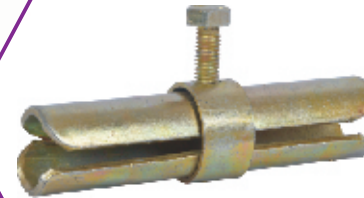
Girder/ Beam Coupler



Drop Forged Swivel Coupler



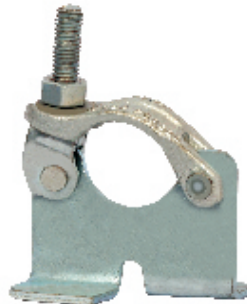
Pressed Swivel Coupler



Expanding Joint Pin



Putlog Coupler



Board Retaining Clamp



Ladder Clamp



## SCAFFOLDING ACCESSORIES



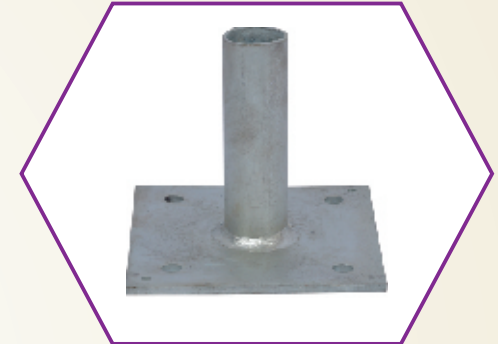
Universal Jack



Adjustable Stirrup Head



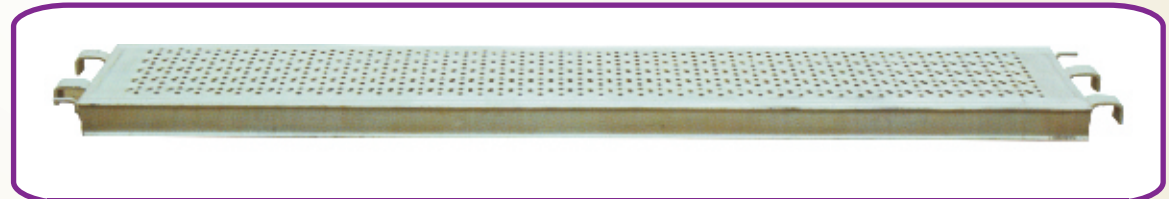
Adjustable Base Jack



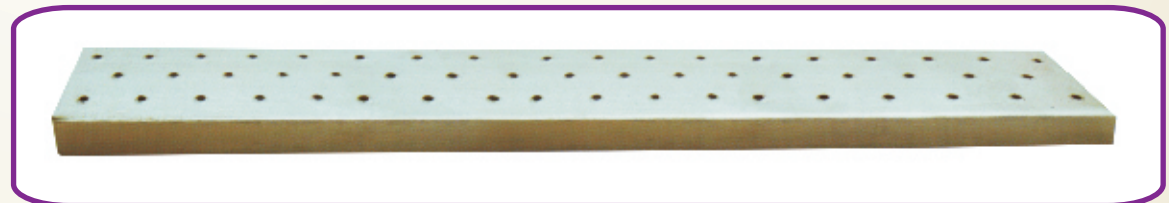
Fixed Base Plate



Scaffolding Pipes



Scaffolding Walkway Boards With Hook



Scaffolding Walkway Boards

## CUPLOCK SYSTEM FITTINGS



Top Cup



Ledger Blade



Bottom Cup



Spigot

## FORMWORK FITTINGS



Wing Nut



Tie Rod



Anchore Nut



Gho-Gho Nut

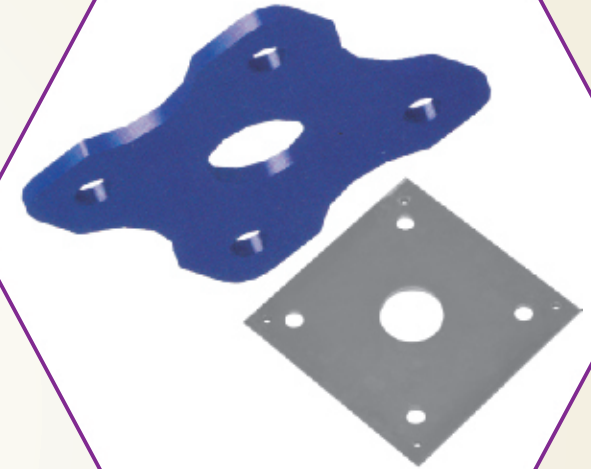
## STEEL PROP FITTINGS



Prop sleeve



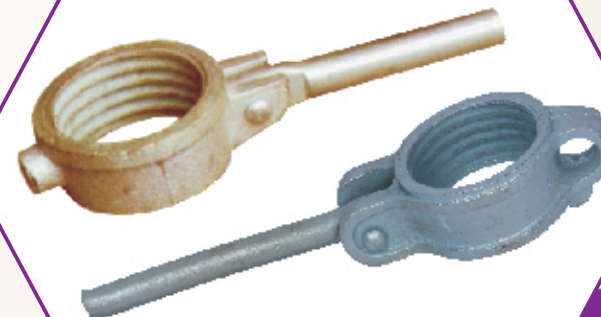
Jack Nut



Prop Base Plate



Heavy Duty Prop Nut



Light Duty Prop Nut





# PRIME STEELTECH (I) PVT. LTD.

— *PARTNERING GLOBAL INFRA GROWTH* —

ISO 9001 CERTIFIED COMPANY

Hotline

+91 9393 161504

+91 85119 57799



**INDIA (HO)** Shop No. B-6, Tuljai CHS Ltd., Kasturba Cross Rd. No. 4, Borivali (E), Mumbai - 400 066. Maharashtra, INDIA

Off : +91 22 65260046 | +91 22 32223010 Mob : +91 9324 560020 | Fax : +91 22 28640046

Email : [sales@primesteeltech.co.in](mailto:sales@primesteeltech.co.in) | [primehosales@gmail.com](mailto:primehosales@gmail.com)



**SAUDI**



**DUBAI**

[www.primesteeltech.co.in](http://www.primesteeltech.co.in)