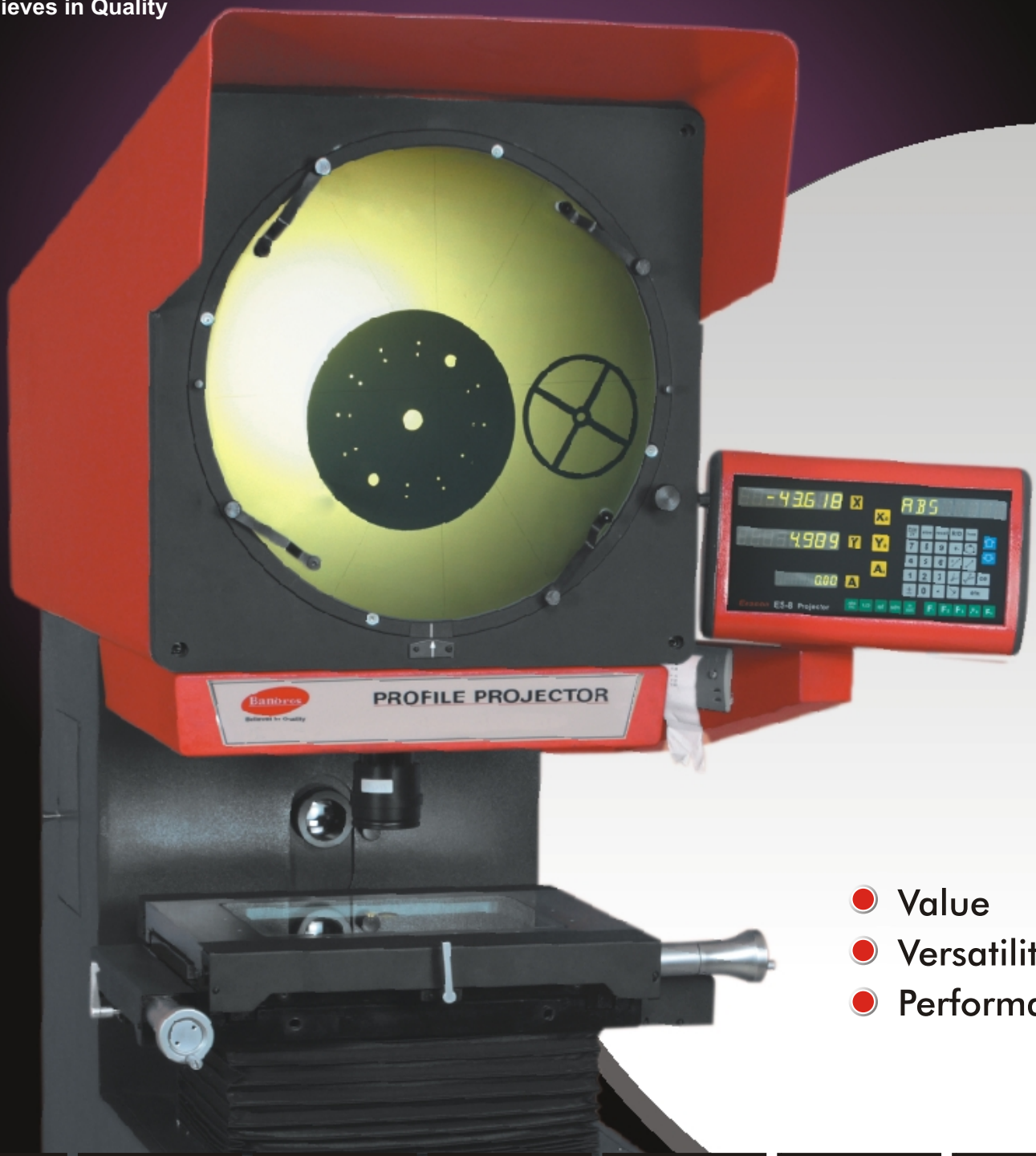


Banbros

Believes in Quality

PROFILE PROJECTOR



- Value
- Versatility
- Performance



THE PRECISION MEASUREMENT PEOPLE



BPH-300

Horizontal Profile Projector with Digital Display & Data Processor is an efficient optical measuring instrument, which is easy to operate and suitable for measuring different shapes of work-pieces with complicated profiles and surfaces with heavy duty work stage to enable the inspection of heavy work pieces such as form cutters, hobs, gears, large screw threads, rolls and large turned components etc. Therefore this instrument is widely used in different machine and instrument manufacturing industries, and it is indispensable for inspection departments and workshops of relative factories.

SPECIFICATIONS:

MODEL	BPH-300	BPH-600
Screen Size(Dia.)	300mm	600mm
Magnification	10x (Standard) or 20x or 50x or 100x	
Rotating range	0-360°	
Working Distance	Contour-65mm, Surface 65mm	
Illumination:	Contour illumination : 12V 100W	
	Surface illumination : 24V 150W	
Resolution	Liner : 0.001mm Angular :1 sec	
Measuring System	Digital Data Processor (Optional PC based software)	
Cross Travel Stage	Table Size 350 x250mm Travel up to 220 x 120mm (X x Y axis)	Table Size 600X200mm Travel up to 300 x200mm (X x Y axis)
Focusing Travel	Y coordinate 80 mm	Y coordinate 150 mm
X,Y coordinate accuracy	(3+L/75) μm	(3+L/75) μm
Dimensions/Weight	450 x 800 x 1000 mm /125Kgs	550 x 900 x 1250 mm /165Kgs.

Note : Screen size is available upto 1200mm.



JBT16 A-Z



JBT12 A-Z

This is an efficient optical measuring instrument, which is easy to operate and suitable for measuring different shapes of work-pieces with complicated profiles and surfaces. Such as punched pieces, gears, cams, thread cutters, templates etc by means of profile compare measure. Therefore, this instrument is widely used in different machine and instrument manufacturing industries, and it is indispensable for inspection departments and workshops of relative factories.

SPECIFICATIONS:

MODEL	JBT-12AZ	JBT-16AZ
Screen Size(Dia.)	300mm	400mm
Magnification	10x (Standard) or 20x or 50x or 100x	
Rotating range	0-360°	
Resolution	Liner : 0.001mm, Angular : 1 sec	
Measuring System	Digital Data Processor (Optional PC Based software)	
X,Y coordinate accuracy	(3+L/100) μm	(3+L/100) μm
Cross Travel Stage	Table Size 340 x152mm Travel up to 150 x 50mm	Table Size 420 x250mm Travel up to 250 x150mm
Focusing Travel	Z coordinate 80 mm	Z coordinate 90 mm
Illumination:	Contour illumination : 12V 100W	
	Surface illumination : 24V 150W	
Dimensions/Weight	450 x 700 x 1150 mm /80Kgs	550 x 800 x 1250 mm /150Kgs.



PB-150



PB-200 / PB-300

It is a bench type Projector suitable for all types of measurements and inspections at industries and institutions. Its multilayer coated Projection lenses provide high transmission and optimum contrast suitable for contour and surface in dimensional measurements and surface inspections. Its unique rigid pedestal system facilitates vibration free handling of components. Wide choice of accessories enhance the scope of applications in various fields. It incorporates both Epi & Diascopic illuminators designed on halogen bulb system to ensure brilliant projection on fine ground glass screen rotatable 360°. The screen has cross and detachable clips to hold comparator charts. Its precision micrometer measuring stage is fitted with Rotary measuring stage. It operates on ball bearing guides fine micrometer reading to 0.01mm. Lifelong smooth movement is assured by the incorporation of hard steel rolling balls both in longitudinal and transverse slides. The basic instrument is supplied with 10x, a multi element coated projection lens. Projection accuracy 0.1% in case of contour and 0.15 % in case of surface is provided. Accurate magnification, maximum luminosity, great contrast, uniform resolution to the edge of the screen, freedom from distortion of the image.

SPECIFICATIONS:

MODEL	PB-150	PB-200	PB-300
Screen Size(Dia.)	150mm	200mm	300mm
Magnification	10x (Standard) or 20x or 50x		
Rotating range	0-360° L.C.1min		
Working Distance	Contour-65mm, Surface 65mm		
Illumination:	Contour Illuminators : 24V 150 Watts		
	Surface Illuminators : 12V 100 Watts		
Cross Travel Stage	Table Size 120 x120mm Travel up to 25 x 25mm with Micrometer Head (0-25mm L.C. 0.01mm)	Table Size 150 x150mm Travel up to 50 x 50mm with Micrometer Head (0-25mm, L.C.0.01mm)	
Dimensions/Weight	19 x 37 x57cm/30Kgs	40 x 60 x 75cm/50Kgs	50 x80x100cm/80Kgs


PPF-300

This is suitable for all type of measurements and inspections at industries and institutions. Its multiplayer coated Projection lenses provide high transmission and optimum contrast suitable for contour and surface in dimensional measurements and surface inspections

SPECIFICATIONS:

MODEL	PPF-300	PPF-600
Screen Diameter	300mm	600mm
Work Stage	250 X 150mm	400 X 300mm
Stage Travel x-y axis	150X 75mm	250 X 150mm
Focussing Range	150mm	200mm
Protactor Screen	360° Rotation with 2 minutes vernier resolution	
Magnification	10x(standard) or 20x or 50x or 100x	
Magnification Accuracy	±0.05% on contour and ±0.1% on surface	
Resolution	0.01 or 0.001mm	
Measuring System	With mech micrometer 0-25mm or DRO or Data processor	
Illumination	24V,150W Halogen, Forced Air cooled, light intensity controller	
Power supply	AC Single phase 230V, 50Hz	

M2D-CPJ series measuring software is developed by our company, which is based on windows -XP, it can visually analysis the 2D measuring data . It is suitable for the 2D measuring instruments with RS232 interface .

SPECIALITIES

- Measure the Point, Line, Circle, Arc and Ellipse feature with multi-point
- The functons of Axis-skew and coordinate-shift are very convenient
- The functions of element-combination can enhance the efficiency
- MACRO function
- Save as *.dxf and edit in AutoCAD
- The data can be sent to Excel, can draw easy Xbar-S graph
- Record, edit and run the program


FUNCTIONS

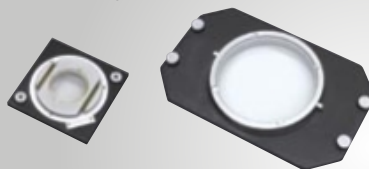
Element measure	Can measure the Point, Line ,Circle, Arc, Angle
	Can measure the rectangle with stated points
	Can identify the Point, Line, Circle and the Arc automatically
Element construct	Center Point, Point of intersection, Midpoint, Line, Circle, Angle
Element preset	Point , Line ,Arc, Angle Graph manage
	Coordinate move and cording skew ,any axis skew
Graph operation	Zoom in ,Zoom out ,Move, Print, Select, Cancel select ,Delete

**PF600****PF300 / PF500/PF600**

Profile projector is specially designed to facilitate high contrast contour measurements of relatively large objects ensuring high accuracy in dimensional measurements, meeting the critical demands of industries and engineering institutes. The versatility of this model lies in sharp, crisp, brilliant & well defined magnified image suitable for edge to edge inspection & measurements.

Workpiece Fixtures

Rotary Tables



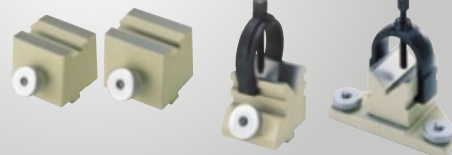
Swivel Center Supports



Center Support



V-Block with Clamp

**SPECIFICATIONS:**

MODEL	PF-300	PF-500	PF-600
Screen Diameter	300mm	400mm	600mm
Work Stage	150 X 150mm	300X200mm	350 X 200mm
Stage Travel x-y axis	50 X 50mm	150X100mm	200 X 100mm
Focussing Range	100mm	150mm	150mm
Resolution	0.01 mm	0.001mm	0.001mm
Protactor Screen	360° Rotation with 2 minutes vernier resolution		
Magnification	10x(standard) or 20x or 50x or 100x		
Measuring System .	With mech. micrometer 0-25mm / D.R.O / Data processor (selectable), (optional PC based software)		
Illumination	24V,150W Halogen, Forced Air cooled, light intensity controller for variable backgrounds.		
Power supply	AC Single phase 230V, 50Hz		

Banbros Engineering Pvt. Ltd.

Office : 105 Usha Chamber, New Rajdhani Enclave, New Delhi - 110092

49/39, Site IV Ind. Area, Sahibabad, Ghaziabad 201010, U.P., INDIA

Tele:0091-120-4556371-9 Fax:0091-120-4251017

E-mail: info@banbrosindia.com, sales@banbrosindia.com

Website: www.banbrosindia.com