



www.krystalcomposites.com

KC-103

Composite Pultruded Structural Profiles

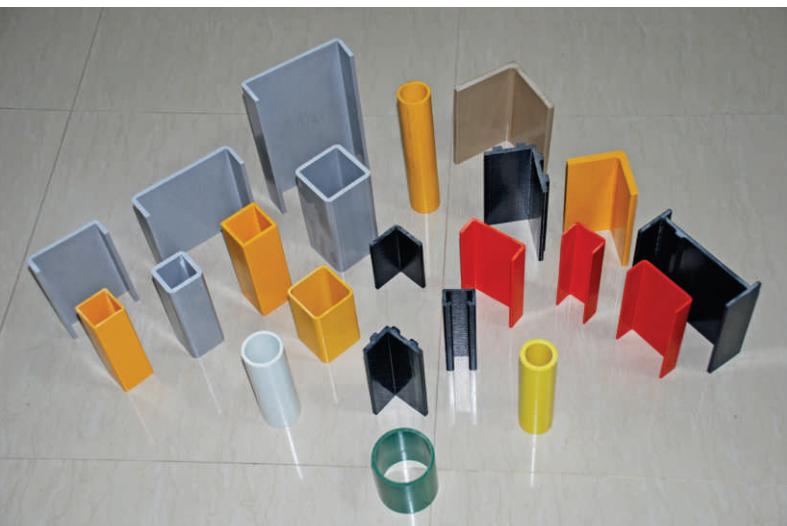


www.krystalcomposites.com

INTRODUCTION

Established in 1981, **Krystal Composites (India) Pvt. Ltd.** manufactures and exports composite raw material & end user products for industrial sectors such as, chemical processing, oil & gas, metals and mining, water and waste water, infrastructure & construction, pharmaceutical industries, food and beverage, pulp and paper, electrical/electronics, railways, aerospace, marine, defence, wind energy, telecommunications and many more. . .

A leader in the field of composites in India, the company delivers standard as well as customised solutions that are ideal replacements for conventional materials prone to corrosion. The State-of-the-Art facility located close to in the western part of India, provides high-quality engineered advanced composite solutions and reliable services, complying with customer specifications as well as national and international standards. Oriented towards continuous improvement, the company operates using principles of Total Integrated Management, ensuring complete customer satisfaction. Dedicated to single point responsibility it encompasses conceptual design, prototype development, testing, manufacturing, logistic support, installation and comprehensive after sales service.

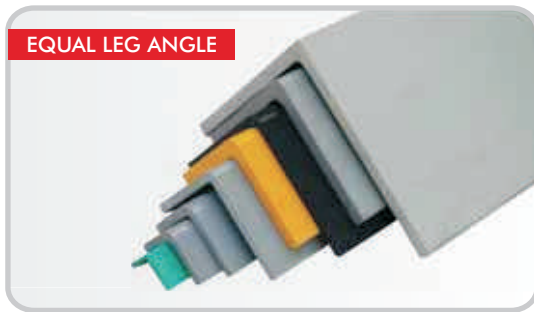


PULTRUDED STRUCTURAL PROFILES

Krystal Composites has grown in recent years to be one of the world's most important pultruders. With over 100 pultrusion lines at its Gujarat, India, facility, daily high volume production, based upon in-house manufactured resins and technical fabrics enables rapid order processing.

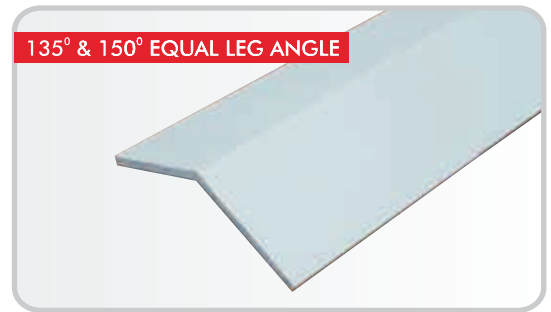
The range of standard profiles is presented here, showing details of the shapes regularly held as stocked items. The standard resin system for stocked items is fire retardant isophthalic polyester. Isophthalic polyester, vinyl ester and phenolic grades are available upon request.

STANDARD PULTRUDED STRUCTURAL PROFILES



EQUAL LEG ANGLE

Size in mm	Wt.(Kg./Mtr)	Wt.(Lbs./Mtr)
25 x 25 x 2.5	0.24	0.54
37 x 37 x 6	0.81	1.79
38.1 x 38.1 x 6.35	0.88	1.94
40 x 40 x 2.5	0.38	0.84
50 x 50 x 6	1.12	2.47
50.8 x 50.8 x 6.35	1.20	2.65
75 x 75 x 6	1.71	3.77
76.2 x 76.2 x 6.35	1.84	4.06
76.2 x 76.2 x 9.525	2.69	5.93
101.6 x 101.6 x 6.35	2.47	5.45
101.6 x 101.6 x 9.525	3.65	8.05
152.4 x 152.4 x 9.525	5.57	12.28



135° & 150° EQUAL LEG ANGLE

Size in mm	Wt.(Kg./Mtr)	Wt.(Lbs./Mtr)
75 x 75 x 6	1.88	4.15
75 x 75 x 6	1.89	4.18



60° EQUAL LEG ANGLE

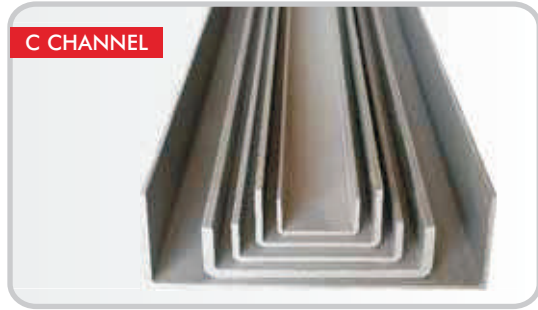
Size in mm	Wt.(Kg./Mtr)	Wt.(Lbs./Mtr)
85 x 85 x 6	1.95	4.30



UN-EQUAL LEG ANGLE

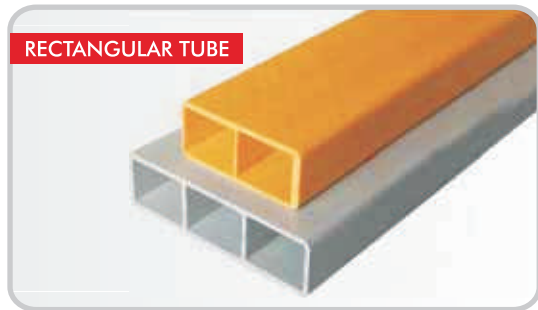
Size in mm	Wt.(Kg./Mtr)	Wt.(Lbs./Mtr)
60 x 40 x 6	1.12	2.47
90 x 50 x 6	1.59	3.51

STANDARD PULTRUDED STRUCTURAL PROFILES



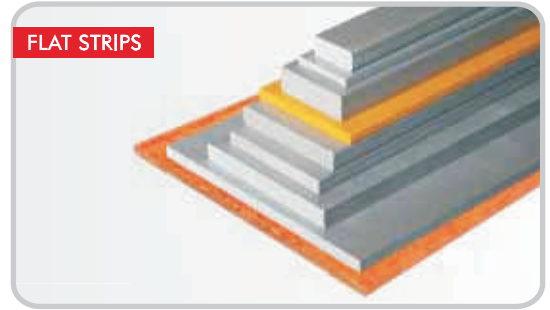
C CHANNEL

Size in mm	Wt. (Kg./Mtr)	Wt. (Lbs./Mtr)
37 x 28 x 3	0.51	1.13
45 x 25 x 3	0.49	1.09
48.5 x 30 x 3	0.58	1.28
50 x 14 x 3.175	0.43	0.94
76.2 x 22.22 x 6.35	1.36	3.00
80.7 x 30 x 3	0.77	1.70
88.9 x 38.1 x 4.76	1.47	3.24
88.9 x 38.1 x 6.35	1.92	4.23
100 x 30 x 4	1.19	2.63
101.6 x 28.575 x 3.175	0.96	2.12
101.6 x 28.575 x 6.35	1.84	4.06
101.6 x 28.575 x 9.525	2.63	5.80
101.6 x 29.63 x 4.23	1.28	2.82
101.6 x 34.93 x 4.76	1.53	3.37
101.6 x 28.575 x 6.35	1.84	4.06
101.6 x 28.575 x 6.35	1.84	4.06
114.6 x 63.6 x 6	2.73	6.02
120 x 50 x 6.35	2.49	5.49
121.28 x 50.8 x 6.35	2.64	5.82
139.7 x 38.1 x 6.35	2.55	5.62
150 x 50 x 6	2.83	6.24
152.4 x 41.27 x 6.35	2.78	6.13
152.4 x 42.86 x 6.35	2.83	6.24
152.4 x 42.86 x 9.525	4.13	9.10
203.2 x 55.56 x 6.35	3.79	8.36
203.2 x 55.56 x 9.525	5.57	12.28
208 x 120 x 4	3.49	7.69
254 x 69.85 x 12.7	9.26	20.41
304.8 x 76.2 x 12.7	10.86	23.94
355.6 x 88.9 x 9.525	9.70	21.38
208.5 x 120 x 4	3.49	7.69



RECTANGULAR TUBE

Size in mm	Wt. (Kg./Mtr)	Wt. (Lbs./Mtr)
88.9 x 38.1 x 3.175	1.69	3.72
139.7 x 38.1 x 3.175	2.53	5.58
127 x 51 x 4	3.92	8.65
127 x 51 x 4	3.30	7.28



FLAT STRIPS

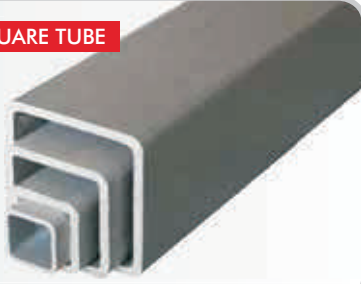
Size in mm	Wt. (Kg./Mtr)	Wt. (Lbs./Mtr)
25.4 x 2.5	0.12	0.27
38.1 x 9.525	0.72	1.58
40 x 5	0.39	0.87
50 x 2.5	0.25	0.55
50 x 10	0.99	2.18
50 x 16	1.58	3.49
65 x 9.525	1.23	2.70
70 x 8	1.11	2.45
70 x 4	0.55	1.22
76.2 x 6	0.96	2.11
76.2 x 9.525	1.44	3.17
76.2 x 3	0.44	0.98
100 x 4.76	0.94	2.07
120 x 3	0.71	1.57
150 x 6	1.78	3.92
166 x 8	2.63	5.80
1219.2 x 9.525	22.99	50.69
1 1/2"	38.1	0.57
1 1/2" x 1/2"	38.1 x 12.7	0.95
2" x 1/2"	50.8 x 12.7	1.27
2 1/2" x 1/2"	63.5 x 12.7	1.59
3" x 1/2"	76.2 x 12.7	1.92



WIDE FLANGE BEAM

Size in mm	Wt. (Kg./Mtr)	Wt. (Lbs./Mtr)
76.2 x 76.2 x 6.35	2.71	5.97
101.6 x 101.6 x 6.35	3.67	8.09
152.4 x 152.4 x 6.35	5.59	12.32
152.4 x 152.4 x 9.525	8.26	18.21

SQUARE TUBE



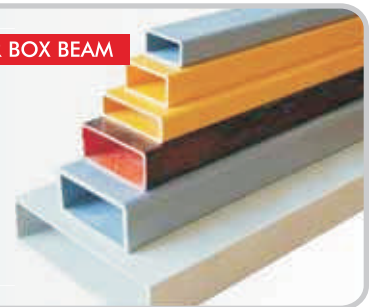
Size in mm	Wt. (Kg./Mtr)	Wt. (Lbs./Mtr)
25 x 25 x 3	0.52	1.15
25 x 25 x 6	0.90	1.98
25.4 x 25.4 x 3.175	0.56	1.23
32 x 32 x 6	1.24	2.73
38.1 x 38.1 x 3.175	0.88	1.94
38.1 x 38.1 x 6.35	1.60	3.54
44.45 x 44.45 x 3.175	1.02	2.26
45 x 45 x 6	1.85	4.08
50 x 50 x 3	1.12	2.47
50.8 x 50.8 x 3.175	1.20	2.65
50.8 x 50.8 x 6.35	1.20	2.65
50.8 x 50.8 x 6.35	2.24	4.94
50.8 x 50.8 x 4.76	1.74	3.84
53.97 x 53.97 x 4.76	1.84	4.07
57.5 x 57.5 x 3.5	1.50	3.31
63 x 63 x 5	2.30	5.07
63.5 x 63.5 x 4.5	2.10	4.63
63.5 x 63.5 x 6.35	2.87	6.33
64 x 64 x 2.6	1.18	2.60
65 x 65 x 3.5	1.65	3.64
76.2 x 76.2 x 3	1.74	3.84
76.2 x 76.2 x 4	2.29	5.05
76.2 x 76.2 x 6.35	3.51	7.74
76.2 x 76.2 x 9.525	5.03	11.09
76.2 x 76.2 x 6	3.38	7.44
88.9 x 88.9 x 6.35	4.15	9.15
101.6 x 101.6 x 3.175	2.47	5.45
101.6 x 101.6 x 6.35	4.79	10.56
101.6 x 101.6 x 10	7.25	15.98
114 x 114 x 6	5.13	11.31
114 x 114 x 8	6.72	14.81
152.5 x 152.5 x 10	11.29	24.89

SQUARE COLUMN



Size in mm	Wt. (Kg./Mtr)	Wt. (Lbs./Mtr)
193.77 x 193.77 x 3.91	6.88	15.17
244.58 x 244.58 x 3.91	8.09	17.84
295.37 x 295.37 x 3.93	9.74	21.46

RECTANGULAR BOX BEAM



Size in mm	Wt. (Kg./Mtr)	Wt. (Lbs./Mtr)
50.8 x 25.4 x 3.175	0.88	1.94
60 x 30 x 3	0.99	2.17
75 x 30 x 3	1.16	2.57
75 x 45 x 3.75	1.66	3.65
75 x 45 x 4.76	2.07	4.57
85 x 25 x 3	1.29	2.84
88.9 x 38.1 x 3.175	1.40	3.10
101.6 x 25.4 x 3.175	1.52	3.35
101.6 x 50.8 x 6.35	3.51	7.74
150 x 100 x 6	6.06	13.36
192 x 50 x 3.5	3.28	7.23
192 x 100 x 3.5	3.97	8.75
200 x 50 x 3.5	3.39	7.47
200 x 100 x 3.5	4.08	9.00

T SECTION



Size in mm	Wt. (Kg./Mtr)	Wt. (Lbs./Mtr)
80 x 80 x 5	1.54	3.39
120.65 x 69.85 x 9.525	3.40	7.49

I BEAM



Size in mm	Wt. (Kg./Mtr)	Wt. (Lbs./Mtr)
101.6 x 50.8 x 6.35	2.40	5.29
152.4 x 76.2 x 6.35	3.67	8.09
203.2 x 55.56 x 9.525	5.70	12.57
203.2 x 101.6 x 9.525	7.31	16.12
304.8 x 152.4 x 12.7	14.69	32.39

STANDARD PULTRUDED STRUCTURAL PROFILES



ROUND TUBE

Size in mm	Wt. (Kg./Mtr)	Wt. (Lbs./Mtr)
76.2 x 4.76 THK	2.12	4.66
150 OD x 10 THK	8.71	19.20
150 OD x 15 THK	12.60	27.77
150 OD x 6 THK	5.38	11.86
16 OD x 2.5 THK	0.19	0.41
25.4 OD x 2.5 THK	0.36	0.79
31.75 OD x 2.5 THK	0.45	1.00
33.5 OD x 2.6 THK	0.57	1.25
44 OD x 6.2 THK	1.46	3.21
44 OD x 4 THK	1.00	2.19
48.36 OD x 3.2 THK	0.90	1.98
50.8 OD x 4 THK	1.16	2.57
50.8 OD x 6 THK	1.67	3.69
50.8 OD x 2.5 THK	0.68	1.50
60.4 OD x 3.2 THK	1.14	2.51
60.4 OD x 9.5 THK	3.01	6.65
83 OD x 3.5 THK	1.73	3.82
87 OD x 5.5 THK	2.79	6.15



FULL SERRATED - 50% SERRATED

Size in mm	Wt. (Kg./Mtr)	Wt. (Lbs./Mtr)
Full Serrated		
31.7 OD x 26 ID	0.44	0.97
50% Serrated		
50.8 OD x 2.5 THK	0.75	1.65



C CHANNEL WITH TOP PART CLOSURE

Size in mm	Wt. (Kg./Mtr)	Wt. (Lbs./Mtr)
150 x 150 x 30 x 3.5 & 5	4.27	9.41



CURVED BACK 'C' CHANNEL

Size in mm	Wt. (Kg./Mtr)	Wt. (Lbs./Mtr)
128 x 40 x 6	2.27	5.00



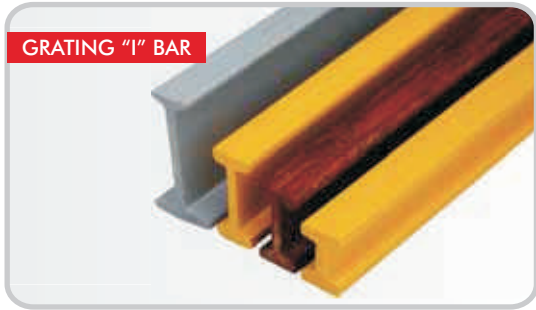
UNISTRUT

Size in mm	Wt. (Kg./Mtr)	Wt. (Lbs./Mtr)
41 x 20 x 4	0.70	1.55
41 x 25 x 4	0.72	1.58
45 x 45 x 3.8	1.10	2.42



GRATING "T" BAR

Size in mm	Wt. (Kg./Mtr)	Wt. (Lbs./Mtr)
25.4	0.50	1.10
38.1	0.57	1.25
50.8	0.67	1.48



GRATING "I" BAR

Size in mm	Wt. (Kg./Mtr)	Wt. (Lbs./Mtr)
25.4	0.44	0.97
31.75	0.48	1.07
38.10	0.53	1.16
38.10	0.53	1.16



SERRATED TOP UN-EQUAL LEG ANGLE ("EZ ANGLE")

Size in mm	Wt. (Kg./Mtr)	Wt. (Lbs./Mtr)
55.56 x 45.24 x 6.35	1.51	3.32
76.2 x 63.5 x 12.7	2.50	5.52



HANDRAIL TOPRAIL

Size in mm	Wt. (Kg./Mtr)	Wt. (Lbs./Mtr)
47.68 x 38 x 4.8	1.36	3.01



F PROFILE

Size in mm	Wt. (Kg./Mtr)	Wt. (Lbs./Mtr)
196 x 50 x 6	3.43	7.56



KICK PLATE

Size in mm	Wt. (Kg./Mtr)	Wt. (Lbs./Mtr)
101.6 x 12.7 x 2.5	0.84	1.86
101.6 x 12.7 x 3	0.84	1.86
110 x 3	0.86	1.90
150 x 3	1.06	2.33



SOUNDWALL

Size in mm	Wt. (Kg./Mtr)	Wt. (Lbs./Mtr)
317.5 x 88.9 x 4.76	7.68	16.93



www.krystalcomposites.com

Head Office

Krystal Composites (India) Pvt. Ltd.

101, SUDAIN, Plot No. 97, Hindu Colony Road No. 3, Dadar (E), Mumbai 400014. INDIA

Tel: +91 22 2410-4500 / 4700 / 4900 • Fax: + 91 22 2410-5400

Email: sales@krystalcomposites.com