
Product Introduction

STB
INTERNATIONAL

Simplicity is The Best

www.stbint.co.kr

2x Liquid Pen Eyeliner (HLT)

HOW TO USE



1. Shake well (3 to 5 times) with cap closed before use.



2. Fix your elbow in place on top of a table and hold the eyeliner pen's end upward.



3. Start from filling close to the lashline and finish with desired shape.



Double Content, 2X Longer Use (1.0ml)

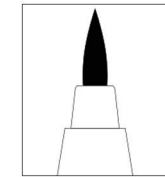
2 shapes to choose from: Round or Flat
Unique, stylish pen eyeliner with stable control

Various Applicators to choose from

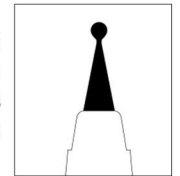
Free-Ink, Airtight Container
No Sponge/felt filter inside for filling
All-Day Multiproof Formula & Easy Cleansing



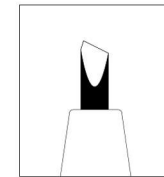
KEY POINT



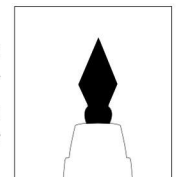
① EL
Basic, easy to use tip for beginners to professionals



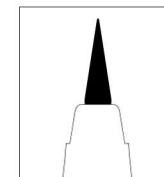
② 1.5 Sphere
Draw close to the lashline and create thick lines with ease



③ Chisel
Marker shaped tip for easily adjusting desired thickness of lines



④ Tulip
Flower bud shaped tip for creating thin lines with great stability



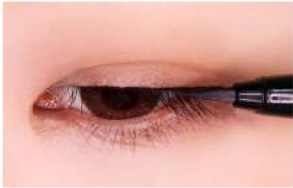
⑤ Sharp
New! Sharpest hybrid applicator
Thin and flexible like a brush, Great flow and color payoff as felt tip

Nal-Thin Liquid Eyeliner (LE701)

HOW TO USE



1. Shake well (3 to 5 times) with cap closed before use.



2. Hold the eyeliner pen firmly and start filling in from the lashline



3. Draw the line from inner to outer corner of an eye and finish with desired shape.



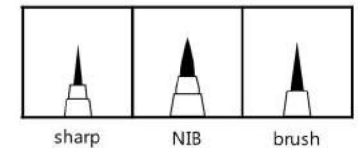
Free-Ink, Airtight Container:
No Sponge/felt filter inside for filling

Various Applicators to choose from
Rich Color Payoff & Easy Line Creation

All-Day Multiproof Formula & Easy Cleansing

KEY POINT

With Brush tip,
a great variety of colored
eyeliners are available!



Snowball Lip Stain (HLT)

HOW TO USE



For gradient lips:
Apply lip stain at the center of the lips and gradually spread it out with finger or cotton swap



For full lips:
Draw along the lip line with circular tip and fill inside for completion.



Juicy type lip stain:
Light texture makes it feel like you have nothing on your lips!
Stains your lips instantly and lasts

all day long!

Soft and cushiony tip makes it super comfortable to apply product
Ink tank container: No more drying tips! Product can be used till the end

KEY POINT

Hot and trendy colors available!
(More colors can be developed at request)



Twist Cushion Pen

(RF 13 37)

HOW TO USE



For the 1st use:

Twist clockwise several times to dispense the formula.

For continued use:

Only twist 1-2 times to dispense desired amount.



Fluffy soft applicator allows any formula inside to glide on smoothly. Direct filling type container easily dispenses formula by simple twist motion.

PPC:

Best for filling various items such as concealer, lip stain, highlighter, liquid eyeshadow, and etc.

KEY POINT

Velvet Lip Tint :

Velvety smooth texture, strong & long-lasting pigment! Create beautifully soft and matte lips to last all day. Choose from various colors or can develop more colors at request



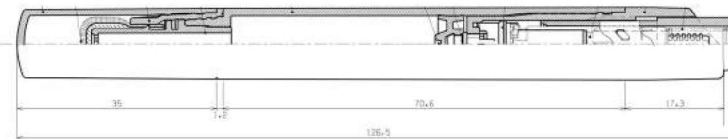
Click Pen (RF 14X)

HOW TO USE



For the 1st use:
Click the bottom button several times to dispense the formula.

For continued use:
Only click 1-2 times to dispense desired amount.



Just enough amount of any liquid type of lipgloss, lip stain or concealer is dispensed with one simple click! Never leaks!!! You can bring it anywhere you go without any worries for spill. Choose from various tips: Brush, Spatula, Flocky, Metal head, PPC

Airtight container:
The formula does NOT dry inside, and can be used until the last drop is left

KEY POINT



1. Brush: Great for liquid type makeup formula like lipgloss, concealer, eyeshadow, etc.

2. Spatula: Tip shape is made easy to apply lip or skin care products.



3. Flocky: Soft applicator for filling and applying various formulas from lip to eye makeup.

4. Metal head: Specially designed for skin care product filling and application.



5. PPC: Best for filling various items such as concealer, lip stain, highlighter, liquid eyeshadow, and etc.

Brand launching



* Brush type



* PPC type

Click Pen Eyeliner (RF 14S)

HOW TO USE



For the 1st use:

Click the bottom button several times to dispense the formula.

For continued use:

Only click 1-2 times to dispense and apply along the lashline to create desired shape and thickness of eyeliner.



Soft brush applicator to easily create desired eyeliner
Colored/Shimmery Eyeliner for multi effect

Airtight, ink tank container:

Formula does NOT dry inside and can be used until the last drop
Just enough amount of eyeliner is dispensed with one simple click!

KEY POINT

Choose from various colors or can develop more colors at request



Auto Eyebrow Pencil

HOW TO USE



1. Draw the outline of eyebrow using pencil and fill in sparse area inside the guideline.



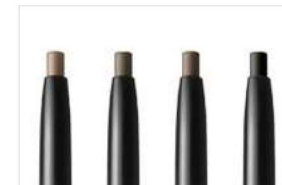
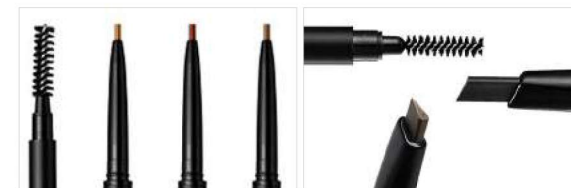
2. Gently brush out the brows with screw brush following brow hair's direction of growth



Soft and natural texture with long lasting pigmentation completes the look of beautiful brows
Great for creating precise brow definition as well as subtle and natural looking brows
Choose from various styles of auto pencil packaging

KEY POINT

Various types of packaging options available!



1. Slim type (1.6 pi)
2. Triangular
3. Round

