



FDA CFDA CE



Patent No. 10-0923425  
Registration No. 0916978

**WON INDUSTRY CO., LTD.**



**WON INDUSTRY CO., LTD.**

[WWW.LEAD-CARE.COM](http://WWW.LEAD-CARE.COM) / [wonindustry@naver.com](mailto:wonindustry@naver.com)

222-5, Daeya-dong, Siheung-si, Kyunggi-do, Korea  
Tel. +82-31-404-3093 / Fax. +82-31-318-5573

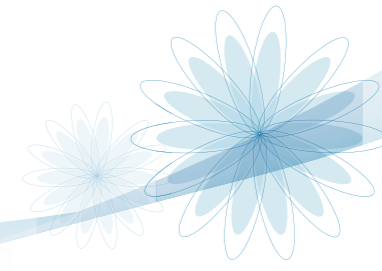


Compressible Limb therapy System

compressible limb therapy system

## About Us,

Since 1963, as a leading manufacturer, we have been trying to achieve technological innovation to increase the quality and efficiency of patient care. The vision of our company is to become one of the world leaders through the integration of technologies, and to offer the absolute best service and selection on medical equipment. We continuously look to improve, expand and broaden our existing product lines and service.



**PNEUMATIC COMPRESSION THERAPY SYSTEM** is specially designed to improve venous and lymphatic circulation by compressing and releasing pressure. It helps to prevent the blood blockage in cardiovascular and to increase the metabolism by increasing the temperature of hypodermic tissue and expanding the blood vessels.

### History

- 1963. Establishment of Won Industry Co.
- 1963. Acquired Manufacturing License (No 11)
- 1963. 12 Acquired product license (Silk Suture No 63-1)
- 1993. 03 Company moved to new building (Sosa dong, Buchun si)
- 1995. 05 Mr. Jung Gon Yang inaugurated as president
- 2001. 02 Export SURGINET to Sigmax, Japan
- 2005. 07 Company moved new building (Daeyadong, Siheung si)  
Approval KGMP
- 2006. 01 Acquired ISO 9001
- 2006. 06 Acquired ISO 14001
- 2006. 08 Establishment registration from FDA(Surginet, 2087101)
- 2007. 04 Acquired Manufacturing license from KFDA(Elastic Band, No 07-130)
- 2008. 04 Approval KGMP
- 2008. 05 Take out Patent of Compressible Limb Therapy System
- 2008. 10 Acquired Manufacturing License (Surginet, No 08-147)
- 2009. 02 Acquired ISO 13485  
Acquired Manufacturing license from KFDA  
(Compressible Limb Therapy System , No 09-84)
- 2012. 11 Patent registration for the air massage accessory (Cuff) (No.10-1201284)
- 2012. 06 Acquired Manufacturing license from CFDA  
(Compressible Limb Therapy System)
- 2012. 12 Design enrollment of the abdominal magnetic belt (No. 30-0672668)  
Patent registration for the medical desktop suction (No. 1212650)
- 2013. Establishment of Hong Kong Branch and dispatch of the branch manager
- 2013. 04 Completion of the new office building.
- 2013. 05 Selected as an e-Trade frontier company in Kyeonggi-Do  
Design enrollment of the medical abdominal binder (No. 30-0694282/ 30-0694283)
- 2014. 03 Registration of the new product, Surgimesh.
- 2016. 06 Registration of the new product, New Compressible Limb Therapy System  
Design Patent registration , Patent registration

### Benefit

- Prevent Cellulitis
- Enhance wound healing
- Improve skin condition
- Increase mobility
- Increase venous and lymphatic circulation
- Reduces the effects of deep vein thrombosis

### Indication

- Effect of exercise
- The old and the weak, fatigue, insomnia
- Person wants to have elastic skin and the healthier body
- Disease by interruption in blood circulation
- Be numbed feet and hands / Stress relief
- Pregnant woman's limb management
- Limb paralysis (Cerebral infarction)
- Limb convulsion (Pain Clinic)
- Chronic disease by the venous cause
- Fat dissolution
- Rheumatoid arthritis
- Lymph edema
- Edema following trauma and sport injuries

### Contraindications and Cautions

- Clients experiencing the following illnesses or conditions should not get Massage therapy
- Burns (severe)
  - Infectious disease
  - Hemophilia \*severe type (a hereditary bleeding disorder)
  - Hemorrhage (involves rapid and uncontrollable loss of blood)
  - Fever above 38,5 degree C or 101,5 F (significant)



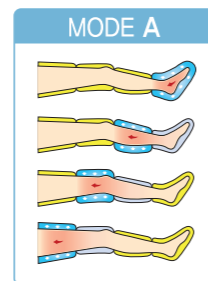
# Morning Life

Vitalizes the circulation of blood and lymph in arms and legs and enhances the pressure of muscular tissues to remove swelling or pain. It helps to recover patients' physical functions from disabilities or agedness.



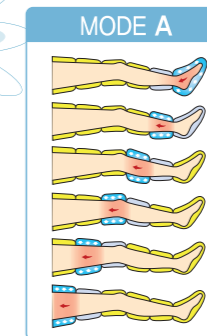
## WIC2008M

- 1 Compression Mode
- Analog Type
- Compact Design
- Time range : 0~30min
- Pressure range: 50~280 mmHg  $\pm$  10%
- Dimension: 280x215x172mm
- Weight: 3,5 Kg



## WIC2008MS

- 1 Compression Mode
- 6 Chambers
- Analog Type
- Compact Design
- Time range : 0~30min
- Pressure range: 50~280 mmHg  $\pm$  10%
- Dimension: 280 x 215 x 172mm
- Weight: 3,5 Kg



# Morning Life

Relaxes, detoxifies, and rejuvenates; but it can also be used as a pre-workout to loosen up muscles and a post-workout to help your muscles recover by ridding them of lactic acid build-up.



## WIC2008L

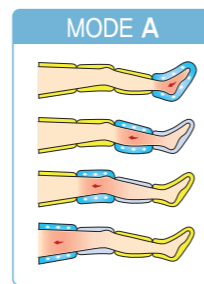
- 2 Compression Mode A, B
- Digital, Compact Design
- Time range : 0~60min
- Pressure range: 50~300 mmHg  $\pm$  10%
- Dimension: 280×215×172mm
- Weight: 4,2 Kg



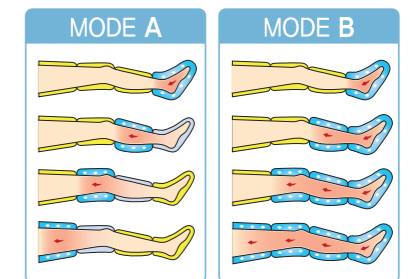
Fishbone

## WIC2008PL

- 1 Compression Mode
- Digital, Compact Design
- Time range : 0~60min
- Pressure range: 50~300 mmHg  $\pm$  10%
- Dimension: 280×215×172mm
- Weight: 4,2 Kg



Massage your feet – calves – knees – thighs by the swelling of the air pressure. It promotes the circulation of blood and body fluids.



### Milking Action

Mode B milks veins and lymphatic vessels from the most distal chamber towards the proximal chamber



# LEAD CARE

LEAD-CARE is a physiotherapy system for prevention and treatment of various diseases related with the blood circulation in arteries including lymphedema.



## WIC2008

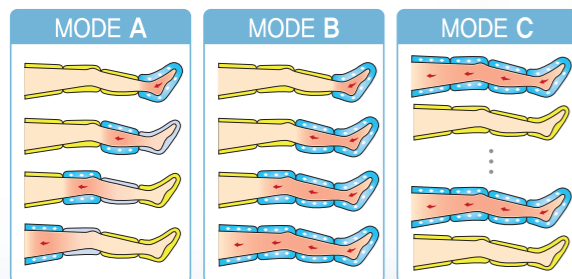
- 3 Compression Mode A,B,C
- Digital, Compact Design
- LCD Graphic Display
- Time range : 0~60min
- Pressure range: 50~300 mmHg ± 10%
- Pressure Speed Controller
- 5 step speed control
- Dimension: 280×215×172mm
- Weight: 4,2 Kg



Triple hose

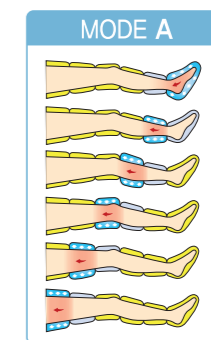


Double hose



## Lead Care LC600M

- Economy type
- Pressure Speed Controller
- 5 step speed control
- Pressure range: 50~300 mmHg ± 10%
- Time range: 0~99min
- Dimension: 415×360×210mm
- Weight: 12 Kg



# LEAD CARE

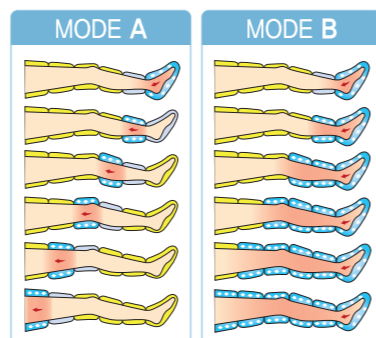
LEAD-CARE is a physiotherapy system for prevention and treatment of various diseases related with the blood circulation in arteries including lymphedema.

## Lead Care LC600D

- Economy type
- 4 cuffs can be used at the same time
- 2 people can use at the same time
- 2 pressure A, B
- Pressure range: 50~280 mmHg ± 10%
- Time range: 0~99min
- Dimension: 415×360×210mm
- Weight: 13,2 Kg

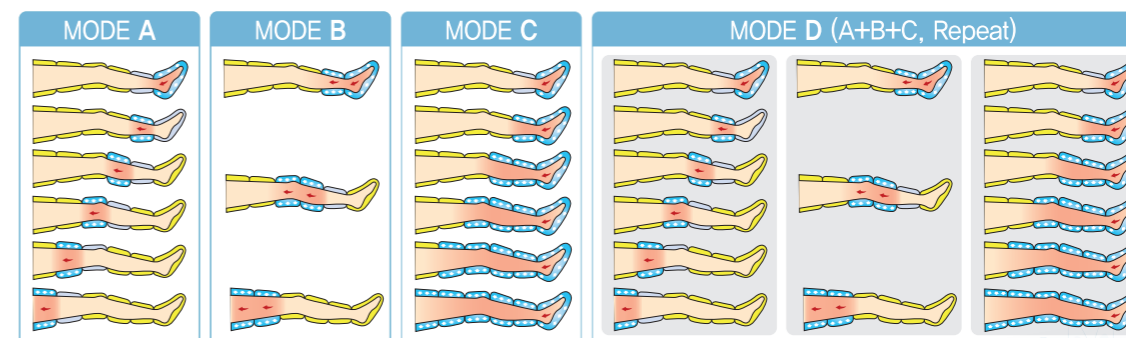


Dual mode for two people at the same time



## Lead Care LC600S

- 4 Compression Mode A, B, C, D
- Pressure Speed Controller
- Easy indicators
- 5 step speed control
- Pressure range: 50~300 mmHg ± 10%
- Time range: 0~99min
- Dimension: 415×360×210mm
- Weight: 10,2 Kg

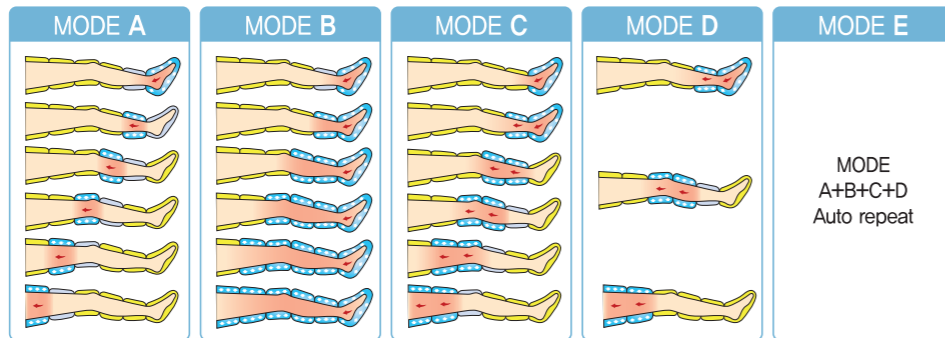


# LEAD CARE

LEAD-CARE is a physiotherapy system for prevention and treatment of various diseases related with the blood circulation in arteries including lymphedema.

## LC600

- LCD Graphic Display
- 5 Compression modes (B mode)
- Pressure speed controller
- Built in Program
- Pressure range: 50~280 mmHg ± 10%
- Time range: 0~60min
- Dimension: 415×360×210mm
- Weight: 12 Kg



Clinically proven non-invasive method of prophylaxis to reduce the incidence of Deep vein thrombosis.

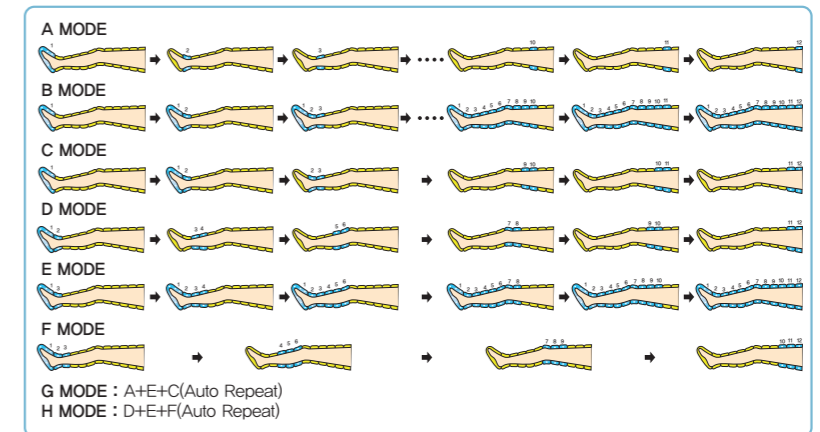


## LC1200P

- LCD Graphic Display
- 8 Compression modes(B mode)
- Pressure speed controller
- Built in Program
- Pressure range: 50~260 mmHg ± 10%
- Time range: 0~60min
- Dimension: 415×360×210mm
- Weight: 12 Kg



Decrease the frequency of bedsores and peripheral edema.

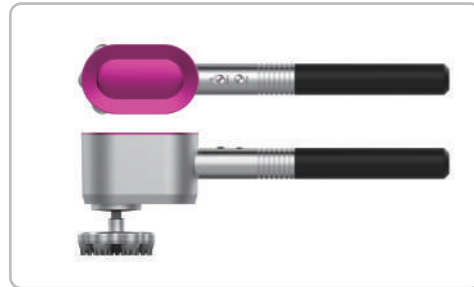


# THOR



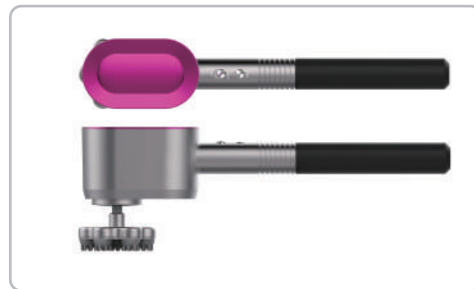
### SET1

**Rated voltage/Power consumption :** 8.4V, 1A / 13W  
**Mode :** Stage 1 to 5 Dynamic Control  
**Color :** White+Black  
**Operation Time :** 15 Minutes Operation Auto Timer  
**Configuration :** Body + Self massage toolX3  
 Three types of replaceable safety bars are available in a variety of areas.



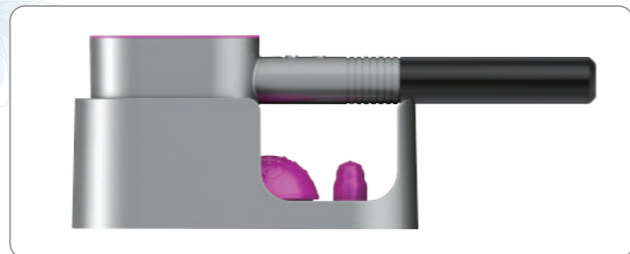
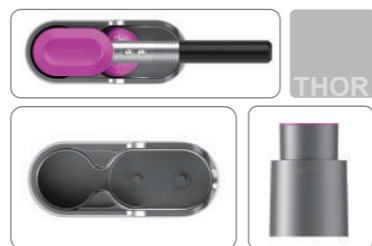
### SET2

**Rated voltage/Power consumption :** 8.4V, 1A / 13W  
**Mode :** Stage 1 to 5 Dynamic Control  
**Color :** Silver+Purple  
**Operation Time :** 15 Minutes Operation Auto Timer  
**Configuration :** Body + Self massage toolX3  
 Three types of replaceable safety bars are available in a variety of areas.

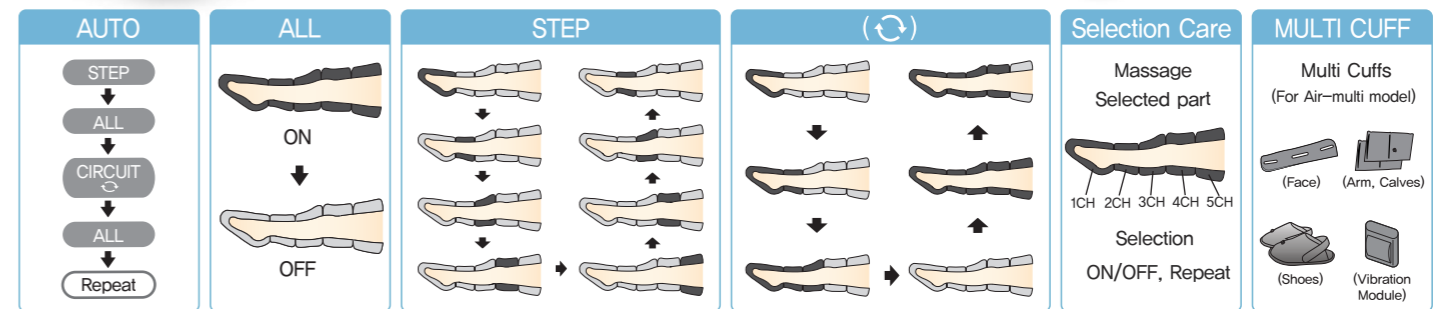


### SET3

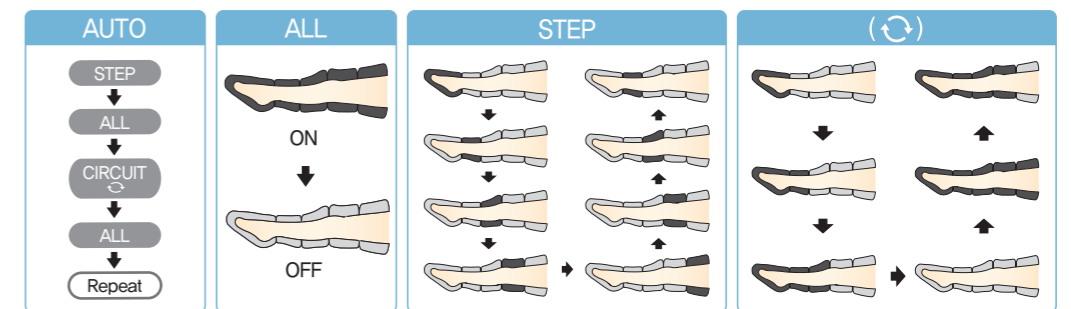
**Rated voltage/Power consumption :** 8.4V, 1A / 13W  
**Mode :** Stage 1 to 5 Dynamic Control  
**Color :** Chacol+Purple  
**Operation Time :** 15 Minutes Operation Auto Timer  
**Configuration :** Body+Self massage toolX3+Cradle  
 Three types of replaceable safety bars are available in a variety of areas.



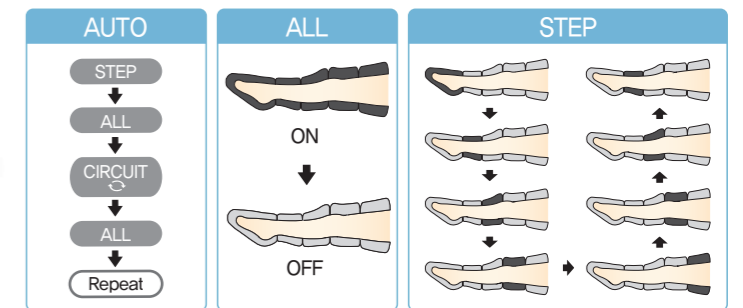
**Air-Multi**  
[Includes Selection Care]



**Air-9**  
[Nine]



**Air-7**  
[Seven]





# Surginet

## Elastic Bandage Net



### + Feature and Benefit

- Cover easily any part of your body
- Unwoven strands
- Free cutting for your purpose
- Washable and Reusable
- Consistent elasticity without transformation

### + Convenient to use

- Simple to use especially for head, breast, shoulder, waist and thigh
- Hold the gauge placed on the affected part comfortably even when you move.

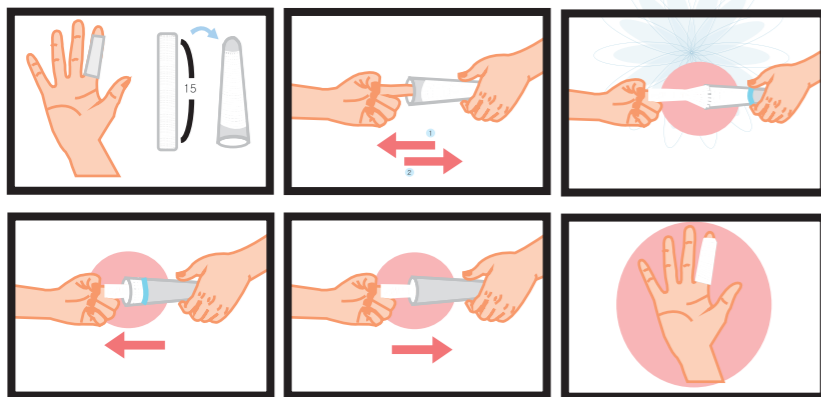
### + Surginet Standard Size

Section	Size	Use
0.5	1.1cm X 25m	More than two fingers, Child's leg
1	1.6cm X 25m	More than two fingers, Child's leg
2	2.0cm X 25m	Hand, Arm, Leg
3	2.2cm X 25m	Foot, Knee
4	2.5cm X 25m	Knee, Thigh, Child's head
5	3.0cm X 25m	Shoulder, Thigh, Child's head
6	5.5cm X 25m	Breast, Waist, Body, Head
7	6.0cm X 25m	Breast, Waist, Body
8	6.5cm X 25m	Breast, Waist, Body
Surgicap	S / L / XL	Head

- Maximum extension 25m | 최대신장률 25m



### + Example



### + Surgimesh Standard Size

Section	Size	Use
1	1.5cm X 25m	More than two fingers, Child's leg
2	2.0cm X 25m	Hand, Arm, Leg
3	2.5cm X 25m	Foot, Knee
4	3.0cm X 25m	Knee, Thigh, Child's head
5	5.0cm X 25m	Shoulder, Thigh, Child's head
6	6.0cm X 25m	Breast, Waist, Body, Head
7	7.0cm X 25m	Breast, Waist, Body

- Maximum extension 25m | 최대신장률 25m

### + Feature and Benefit

- Cover easily any part of your body
- Unwoven strands
- Free cutting for your purpose
- Washable and Reusable
- Consistent elasticity without transformation

### + Convenient to use

- Simple to use especially for head, breast, shoulder, waist and thigh
- Hold the gauge placed on the affected part comfortably even when you move.



#### 사용목적

신체(허리, 무릎, 발목, 손목, 등)의 일부분을 탄력으로 압박하거나 잡아주는 등의 목적으로 사용합니다.

#### 사용방법

각 신체부위에 맞는 규격을 선택후 용도에 맞게 잘라 사용합니다. 제품의 처치 방법은 별도의 설명서를 참고합니다.

**보관방법** | 직사광선을 피하여 통풍이 잘되는 곳에 보관할 것

#### 사용시 주의사항

- 폭이 너무 작은 것을 사용하지 말 것
- 사용하고자 하는 부분에 충분히 덮힐 정도로 잘라 사용할 것
- 한번 사용한 탄력밴드를 반복하여 사용하지 말 것
- 제품이 오염되었을 시 즉시 새 것으로 교체하여 사용할 것
- 보관 시 부주의로 제품에 걸 포장지와 제품이 변색이 되었거나 제품에 오염 물질이 묻었다면 사용하지 말 것